



European
Commission

June 2021

Statistical Factsheet

Germany



CONTENTS

Main figures	1
1. KEY DATA	2
2. POPULATION & ECONOMY	3-4
3. FINANCIAL ASPECTS	5-6
4. ECONOMIC ACCOUNTS	7-13
5. AGRICULTURAL TRADE	14-15
6. FARM STRUCTURE	16-18

Main figures - Year 2020		
Population (1 st January)	83 166 711	persons
Area*	357 569	km ²
Currency	EUR	euro
Nominal GDP at current prices	3 332 230	million EUR
GDP per capita at current prices	40 173	EUR
GDP per capita at purchasing power	36 400	PPS
Harmonised index of consumer prices	0.4%	change over previous year
Unemployment rate	4.0	% of labour force
Exports (goods & services)	1 454 525	million EUR (current prices)
Imports (goods & services)	1 286 946	million EUR (current prices)
Balance (goods & services)	167 579	million EUR (current prices)
Exports of agricultural products	75 222	million EUR (current prices)
Imports of agricultural products	92 261	million EUR (current prices)
Current account balance	6.0	% of GDP
General government balance	-6.0	% of GDP
General government gross debt	71.2	% of GDP

Sources: European Commission, Eurostat (Online Data Table: [urt_d3area](#), [urt_pjanaggr3](#)), and Directorate General for Economic and Financial Affairs.

*Data refer to the year 2016

(e) Estimation

Updated: June 2021

1. KEY DATA

Macroeconomics				
Population				
Total population (number of persons), of which:	2020	83 166 711	18.6%	of EU27_2020
in predominantly rural regions	2020	15.6%	20.8%	in EU27_2020
in intermediate regions	2020	40.8%	38.9%	in EU27_2020
in predominantly urban regions	2020	43.6%	40.3%	in EU27_2020
Population in Predominantly rural regions (Persons)	2020	12 990 603	14.0%	of EU27_2020
GDP (current basic prices)				
Total (million EUR)	2020	3 332 230	25.0%	of EU27_2020
GDP per capita (EUR/person)	2020	40 173	29 355	in EU27_2020
GDP per capita (PPS/person)	2020	36 400	29 700	in EU27_2020
Real GDP growth rate (% change over previous year)	2020	-5.6%	-7.4%	in EU27_2020
Gross value added				
Agriculture, forestry and fishing (% of total GVA)	2020	0.7%	1.9%	in EU27_2020
Financial aspects				
Common Agricultural Policy expenditure				
Total expenditure (million EUR), of which:	2020	6 280	11.5%	of EU27_2020
Direct payments (%)	2020	75.9%	69.9%	in EU27_2020
Market measures (%)	2020	1.9%	4.6%	in EU27_2020
Rural development (%)	2020	22.2%	25.5%	in EU27_2020
Economic accounts of agriculture				
Agricultural output (current basic prices)				
Agricultural output (million EUR), of which:	2020 (e)	55 837	14.1%	of EU27_2020
Crop output, of which:		48.9%	12.6%	of EU27_2020
Cereals (including seeds)		12.6%	15.3%	of EU27_2020
Industrial crops		7.2%	21.6%	of EU27_2020
Forage plants		9.4%	21.2%	of EU27_2020
Vegetables and horticultural products		10.9%	10.6%	of EU27_2020
Potatoes		4.2%	19.0%	of EU27_2020
Fruits		1.4%	2.7%	of EU27_2020
Wine		2.9%	7.2%	of EU27_2020
Olive oil		0.0%	0.0%	of EU27_2020
Animal output, of which:		46.7%	16.4%	of EU27_2020
Cattle		5.6%	11.3%	of EU27_2020
Pigs		13.3%	18.9%	of EU27_2020
Sheep and goats		0.3%	4.0%	of EU27_2020
Poultry		4.4%	12.8%	of EU27_2020
Milk		19.2%	19.9%	of EU27_2020
Eggs		1.9%	11.7%	of EU27_2020
Gross value added at current prices (million EUR)	2020 (e)	20 257	11.4%	of EU27_2020
Agricultural input (current basic prices)				
Total intermediate consumption (million EUR)	2020 (e)	36 547	15.6%	of EU27_2020
Agricultural income (real prices)				
Agricultural Income*(% change over previous year, 2010=100)	2020 (e)	-14.6%	-1.2%	in EU27_2020
Farm structure				
Holdings				
Total (No), of which:	2016	276 120	2.7%	of EU27_2020
UAA < 5 ha (%)	2016	8.6%	66.6%	in EU27_2020
Economic size < 4 000 €	2016	2.7%	54.9%	in EU27_2020
Holder < 35 years (%)	2016	7.4%	5.1%	in EU27_2020
Holder > 64 years (%)	2016	8.2%	32.8%	in EU27_2020
UAA per holding (ha)	2016	60.5	15.2	in EU27_2020
Labour force				
AWU (No)	2016	502 610	5.7%	of EU27_2020
Female farm holders (%)	2016	10.2%	30.7%	in EU27_2020
Male farm holders (%)	2016	89.8%	68.8%	in EU27_2020
Agriculture in % of total employment	2020	1.2%	4.0%	in EU27_2020

Sources: European Commission(Ameco), Eurostat(Online Data Table: urt_pjanaggr3, aact_eaa01, ef_m_farmleg, ef_m_farmang, ef_if_main, ifsa_egan2) and Directorate General for Agriculture and Rural Development.

*Indicator A- See definition at page 10

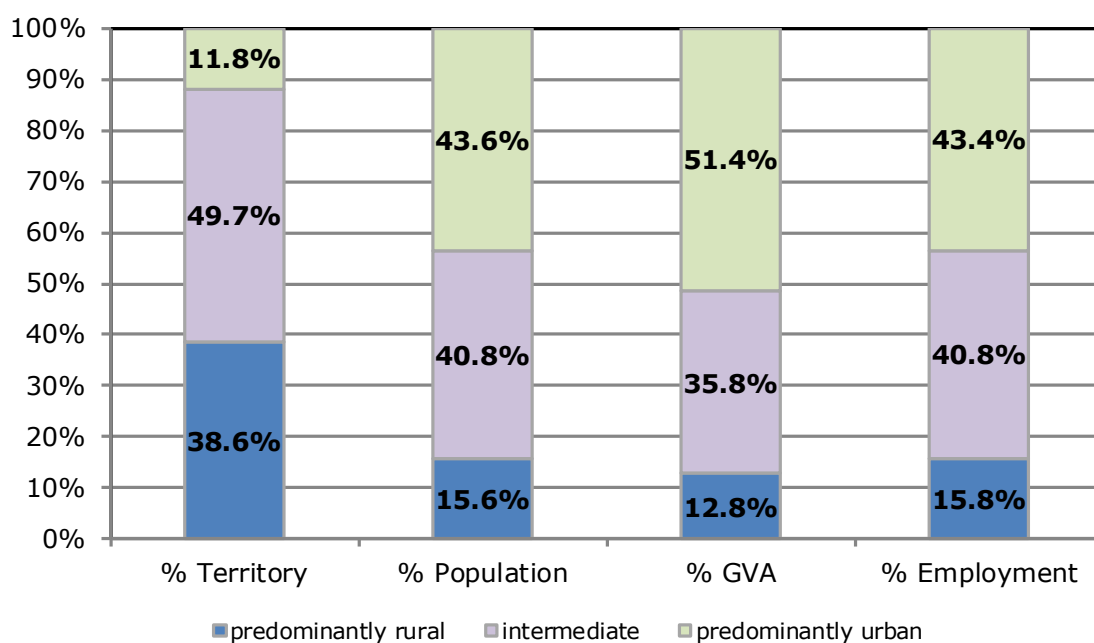
2. POPULATION AND ECONOMY

Importance of rural areas

	Territory (km2)	Population (persons)	GVA (Million EUR)	Employment (persons)
Year	2016	2020	2018	2019
Predominantly Rural Regions	137 928	12 990 603	385 801	6 490 200
Intermediate Regions	177 571	33 918 022	1 084 105	16 741 200
Predominantly Urban Regions	42 070	36 258 086	1 554 516	17 833 700
Total	357 569	83 166 711	3 024 422	41 065 100

Source: Eurostat (Online Data Table: urt_d3area, urt_pjanagr3, urt_10r_3gva, urt_lfe3emp)

Updated: June 2021



Degree of urbanisation	Share of land (%)	Share of population (%)
	2018	2018
Rural areas	66.6%	23.4%
Towns and suburbs	28.3%	41.5%
Cities	5.0%	35.1%

Source: Eurostat, GISCO

*Based on 2011 population grid, LAU 2018 delineation and NUTS 2016.

2. POPULATION AND ECONOMY

Economic forecast

Indicators	2013	2014	2015	2016	2017	2018	2019	2020	2021(f)	2022(f)
GDP										
In million EUR (current prices)	2 811 350	2 927 430	3 026 180	3 134 740	3 259 860	3 356 410	3 449 050	3 332 230	3 500 226	3 698 569
Per capita (in PPS; current prices)	32 500	33 700	34 200	35 100	36 400	37 200	37 700	36 400	38 100	40 100
% change over previous period										
GDP growth at constant prices (2015=100)	0.4%	2.2%	1.5%	2.2%	2.6%	1.3%	0.6%	-5.6%	3.5%	2.6%
GDP deflator (2015=100)	2.0%	1.9%	1.9%	1.3%	1.4%	1.7%	2.2%	2.6%	1.4%	1.5%
Harmonised index of consumer prices	1.6%	0.8%	0.7%	0.4%	1.7%	1.9%	1.4%	0.4%	1.4%	1.3%
Exports (goods and services)	1.0%	4.8%	5.4%	2.5%	4.7%	2.3%	1.0%	-9.7%	6.2%	4.2%
Imports (goods and services)	2.7%	3.9%	5.8%	4.5%	5.3%	3.6%	2.6%	-6.8%	5.5%	4.5%
Net exports of goods and services (million EUR)	161 891	193 750	229 846	231 246	228 081	206 376	199 931	167 579	184 546	193 834
% of total employment										
Unemployment rate	5.2	5.0	4.6	4.1	3.8	3.4	3.1	4.0	4.0	3.8
% of GDP										
Current account balance	6.6	7.2	8.6	8.5	7.8	7.4	7.1	6.0	6.3	6.1
General government balance	0.0	0.6	1.0	1.2	1.4	1.8	1.5	-6.0	-4.0	-2.5
General government gross debt	78.7	75.7	72.2	69.3	65.1	61.8	59.6	71.2	70.1	69.0

Source: European Commission, Directorate General for Economic and Financial Affairs

Updated: June 2021

f: forecast

3.1. AGRICULTURE: FINANCIAL ASPECTS

CAP expenditure

Measures	2020	2020	
	1 000 EUR	% of total	% of heading
Decoupled direct aids	4 690 461	74.7%	98.4%
Other direct aids	18 014	0.3%	0.4%
Additional amounts of aid	0	0.0%	0.0%
Reimbursement of direct aids in relation to financial discipline	59 648	0.9%	1.3%
Direct payments (Total)	4 768 123	75.9%	100.0%
Olive oil	0	0.0%	0.0%
Textile plants	0	0.0%	0.0%
Fruit and vegetables	49 363	0.8%	42.1%
Wine sector	37 907	0.6%	32.3%
Promotion	573	0.0%	0.5%
Other plant products/measures	2 277	0.0%	1.9%
Milk and milk products	- 25	0.0%	0.0%
Beef and veal	0	0.0%	0.0%
Sheepmeat and goatmeat	0	0.0%	0.0%
Pigmeat, eggs, poultry and other	1 361	0.0%	1.2%
School schemes*	25 799	0.4%	22.0%
Market measures (Total)	117 256	1.9%	100%
Rural development (Total)	1 394 589	22.2%	100%
TOTAL	6 279 967	100.0%	

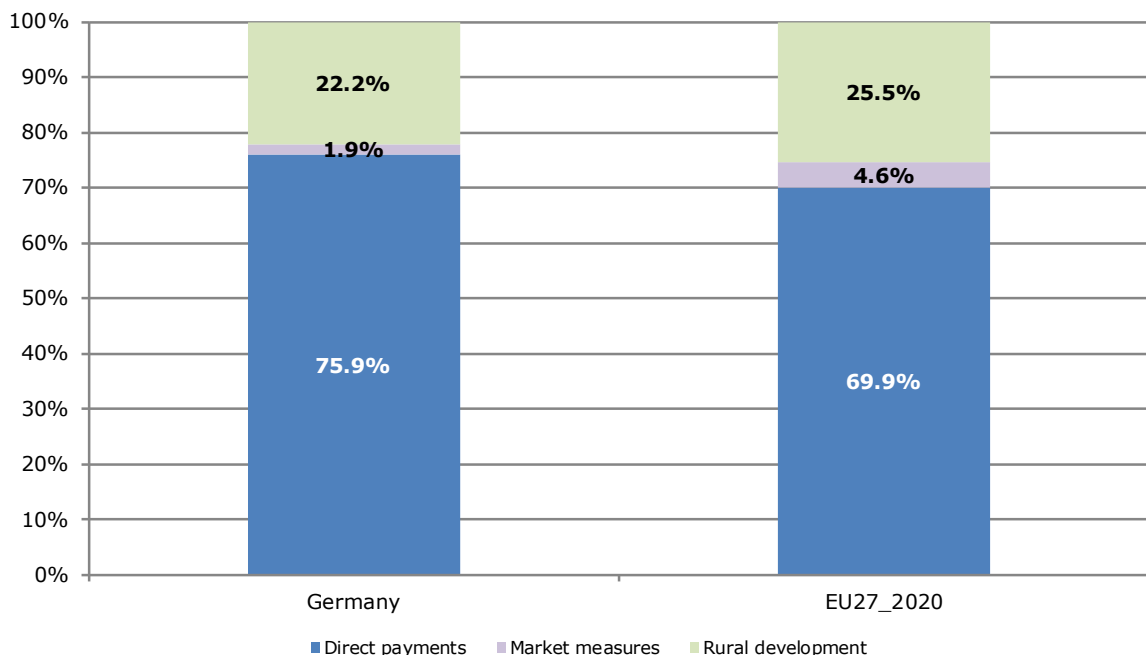
Note: Expenditure in commitments for direct payments and market measures; ceilings of support for rural development. Negative values represent beneficiaries that in total reimbursed money to the EAGF (recoveries, corrections, etc.)

* Programme implementation based on school years; reimbursement possible in the next financial year

Source: European Commission, Directorate General for Agriculture and Rural Development

Updated: June 2021

Distribution of CAP expenditure



3.2. AGRICULTURE: FINANCIAL ASPECTS

Distribution of direct aids to the producers

Size-class of aid (all direct payments)	Financial year 2019*			
	Beneficiaries		Payments in EUR	
	x 1 000	% of total	x 1 000	% of total
< 0 €	0.02	0.00%	-19	0.0%
≥ 0 and < 500 €	13.72	4.41%	5 299	0.1%
≥ 500 and < 1 250 €	37.59	12.09%	32 663	0.7%
≥ 1 250 and < 2 000 €	27.06	8.70%	42 984	0.9%
≥ 2 000 and < 5 000 €	61.88	19.90%	204 362	4.3%
≥ 5 000 and < 10 000 €	51.83	16.67%	368 254	7.7%
≥ 10 000 and < 20 000 €	56.44	18.15%	817 065	17.0%
≥ 20 000 and < 50 000 €	47.68	15.34%	1 437 998	30.0%
≥ 50 000 and < 100 000 €	9.38	3.02%	626 655	13.1%
≥ 100 000 and < 150 000 €	2.03	0.65%	245 587	5.1%
≥ 150 000 and < 200 000 €	0.97	0.31%	166 863	3.5%
≥ 200 000 and < 250 000 €	0.70	0.23%	157 245	3.3%
≥ 250 000 and < 300 000 €	0.46	0.15%	126 196	2.6%
≥ 300 000 and < 500 000 €	0.82	0.26%	310 396	6.5%
≥ 500 000 €	0.37	0.12%	252 896	5.3%
Total	310.92	100%	4 794 444	100%

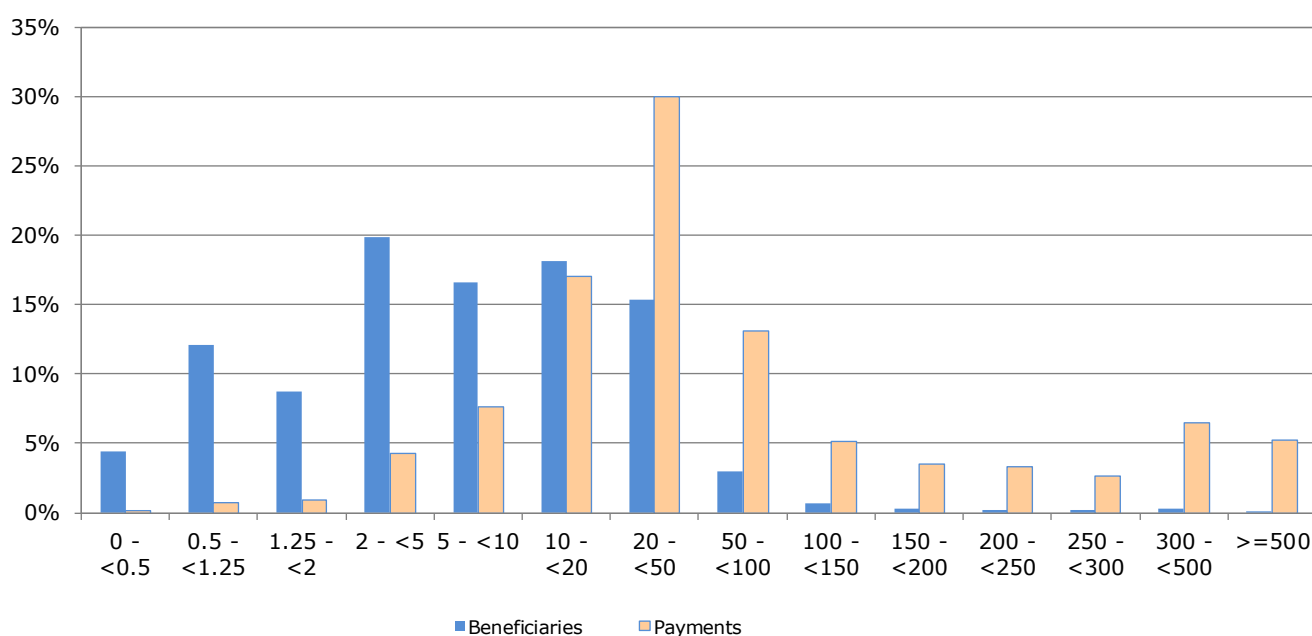
Source: European Commission, Directorate General for Agriculture and Rural Development.

* Figures for financial year 2020 will become available during the second half of 2021. Negative values represent beneficiaries that in total reimbursed money to the EAGF (recoveries, corrections, etc.)

Note: In order to protect the anonymity of the beneficiaries, numbers less than 10 have been made invisible in this table.

Updated: June 2021

Indicative figures on the distribution of direct aid by size-class of aid (1 000 EUR)



4.1. AGRICULTURE: ECONOMIC ACCOUNTS

Agricultural output

Output components (real prices)	2018	2019	2020 (e)		
	Million EUR		Million EUR	% of total	% of EU27_2020
Cereals:	4913	6 189	5 935	13.2%	14.6%
Wheat and spelt	2644	3 218	3 076	7%	16.2%
Rye and meslin	274	351	441	1%	39.1%
Barley	1180	1 634	1 428	3%	19.3%
Oats and summer cereal mixtures	85	84	103	0%	7.1%
Grain maize	518	601	622	1%	6.6%
Rice		0	0	0%	0.0%
Other cereals	213	302	265	1%	15.8%
Industrial crops:	3915	3 390	3 405	7.6%	20.6%
Oil seeds and oleaginous fruits	1109	914	1 145	3%	12.7%
Protein crops	54	71	0	0%	0.0%
Raw tobacco	15	17	0	0%	0.0%
Sugar beet	620	655	0	0%	0.0%
Other industrial crops	2116	1 733	2 261	5%	53.4%
Forage plants	2936	4 752	4 433	9.9%	20.2%
Vegetables and horticultural products	4838	5 327	5 135	11.4%	9.9%
Potatoes	1798	2 612	1 957	4.4%	18.1%
Fruits	1021	777	674	1.5%	2.5%
Wine	1186	919	1 342	3%	6.7%
Olive oil		0	0	0%	0.0%
Other crop products	124	119	120	0%	6.1%
Crop output	20 731	24 084	23 002	51.2%	11.8%
Animals:	12 178	12 707	11 693	26.0%	14.0%
Cattle	3 200	2 840	2 625	5.8%	10.7%
Pigs	6 167	6 910	6 244	13.9%	17.7%
Equines	113	130	132	0.3%	15.3%
Sheep and goats	147	133	130	0.3%	3.7%
Poultry	2 105	2 209	2 081	4.6%	12.0%
Other animals	446	485	481	1.1%	23.6%
Animal products:	11 345	10 910	10 259	22.8%	17.7%
Milk	9 989	9 636	9 045	20.1%	19.0%
Eggs	1 054	946	894	2.0%	11.1%
Other animal products	303	329	320	0.7%	14.6%
Animal output	23 523	23 617	21 952	48.8%	15.5%
Agricultural goods output	44 254	47 701	44 955	100.0%	13.4%

(e) 2020 data are estimates and may still change.

Updated: June 2021

Source: Eurostat(Online Data Table: aact_eaa04), Economic Accounts for Agriculture (Production value at basic price).

4.2. AGRICULTURE: ECONOMIC ACCOUNTS

Agricultural input

Input components (real prices)	2018	2019	2020 (e)	2019/2018	2020 (e) /2019
	Million EUR			% Change	
Seeds and planting stock	1 514	1 581	1 548	4.4%	-2.1%
Energy	3 072	3 076	2 961	0.1%	-3.7%
Fertilisers and soil improvers	1 348	1 494	1 451	10.9%	-2.9%
Plant protection products	1 492	1 379	1 279	-7.5%	-7.3%
Veterinary expenses	815	795	799	-2.5%	0.5%
Feedingstuffs	13 901	13 128	12 614	-5.6%	-3.9%
Maintenance of materials	1 957	1 912	1 938	-2.3%	1.4%
Maintenance of buildings	919	905	948	-1.5%	4.8%
Agricultural services	2 137	2 000	2 048	-6.4%	2.4%
Other goods and services	4 662	4 645	4 643	-0.4%	0.0%
Total intermediate consumption	32 376	31 465	30 764	-2.8%	-2.2%
Fixed capital consumption	9 284	9 332	9 243	0.5%	-1.0%

(e) 2020 data are estimates and may still change.

Source: Eurostat(Online Data Table: aact_eaa04), Economic Accounts for Agriculture (Production value at basic price)

Updated: June 2021

Agricultural income

By category of product (real prices)	2018	2019	2020 (e)	2019/2018	2020 (e) /2019
	Million EUR			% Change	
Output of the agricultural "industry":	47 242	50 537	47 817	7.0%	-5.4%
Crop output	20 731	24 084	23 002	16.2%	-4.5%
Animal output:	23 523	23 617	21 952	0.4%	-7.0%
<i>Animals</i>	12 178	12 707	11 693	4.3%	-8.0%
<i>Animal products</i>	11 345	10 910	10 259	-3.8%	-6.0%
Agricultural services	2137	2 000	2 048	-6.4%	2.4%
Secondary activities	851	836	814	-1.8%	-2.6%
- Intermediate consumption	32 376	31 465	30 764	-2.8%	-2.2%
= Gross value added at basic prices	14 866	19 073	17 052	28.3%	-10.6%
- Consumption of fixed capital	9 284	9 332	9 243	0.5%	-1.0%
- Taxes	226	223	216	-1.2%	-3.3%
+ Subsidies	6 268	6 232	5 861	-0.6%	-6.0%
= Factor income	11 624	15 750	13 454	35.5%	-14.6%
Agricultural income* (2010=100)	85.1	117.5	100.4	38.1%	-14.6%

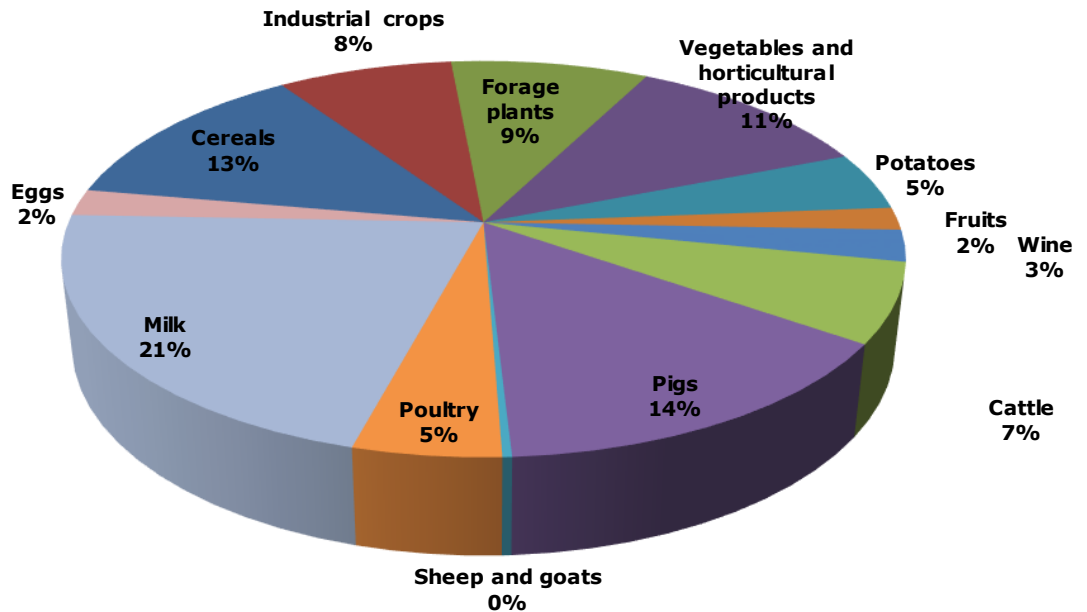
(e) 2020 data are estimates and may still change.

Updated: June 2021

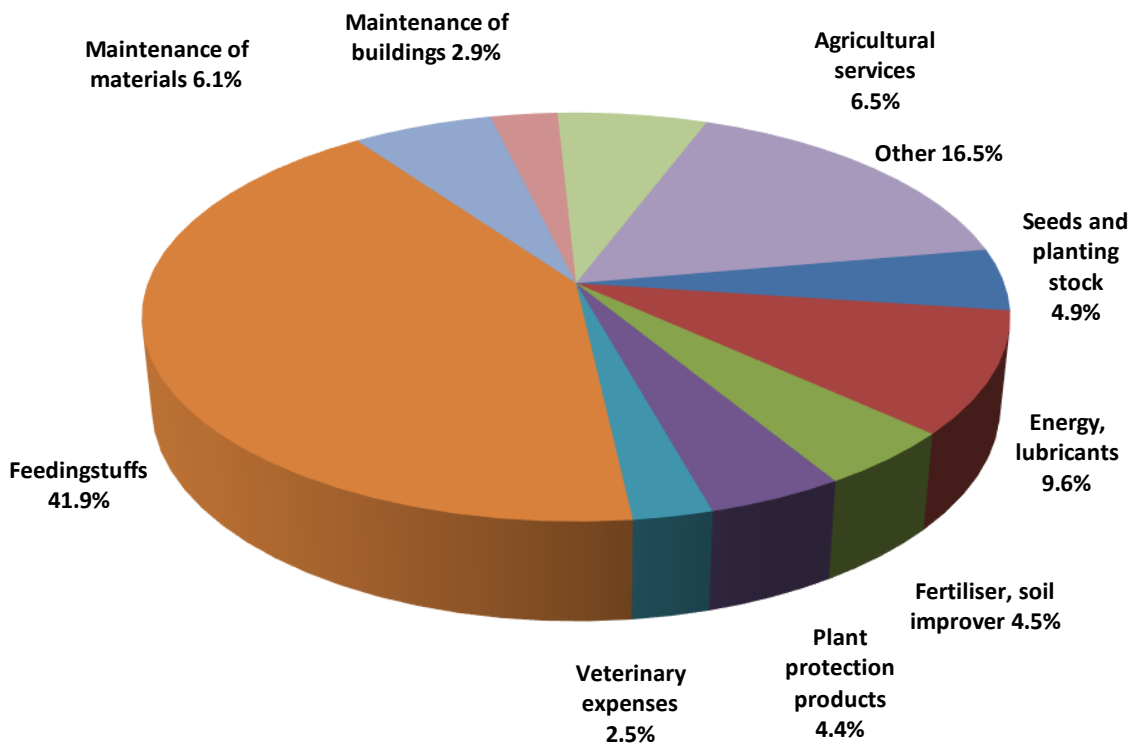
Source: Eurostat(Online Data Table: aact_eaa04 aact_eaa06), Economic Accounts for Agriculture (Production value at basic price, Real Values, Index, 2010=100)

4.3. AGRICULTURE: ECONOMIC ACCOUNTS

Output components (2018-2020 average)



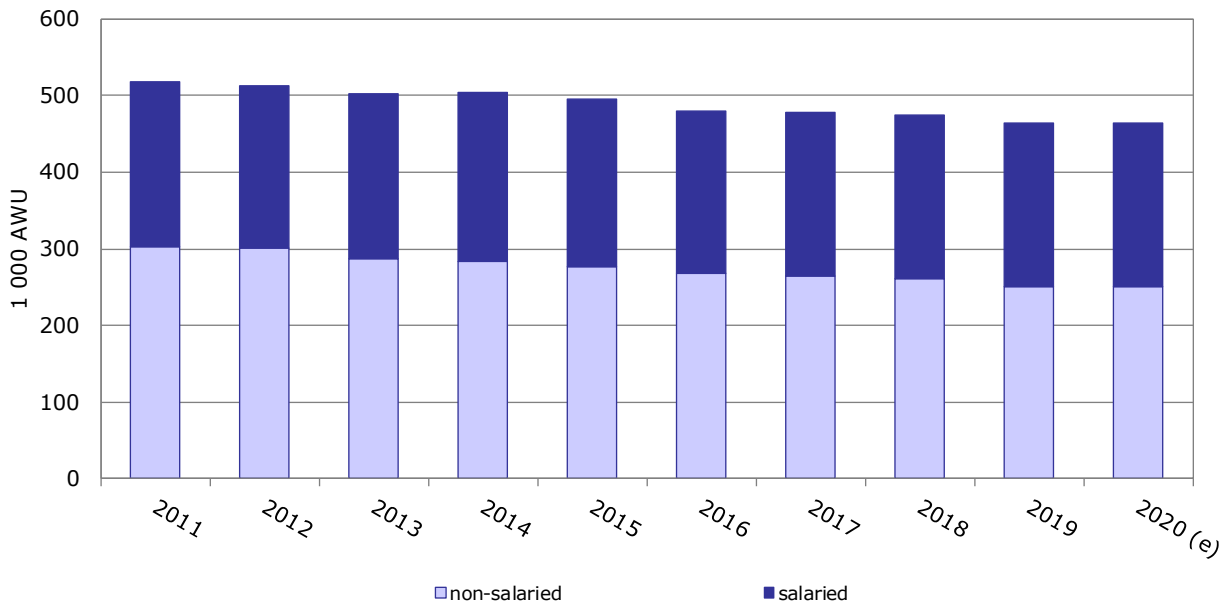
Intermediate consumption (2018-2020 average)



Source: Eurostat (Online Data Table: aact_eaa04) , Economic Accounts for Agriculture (values at real basic price)

4.4. AGRICULTURE: ECONOMIC ACCOUNTS

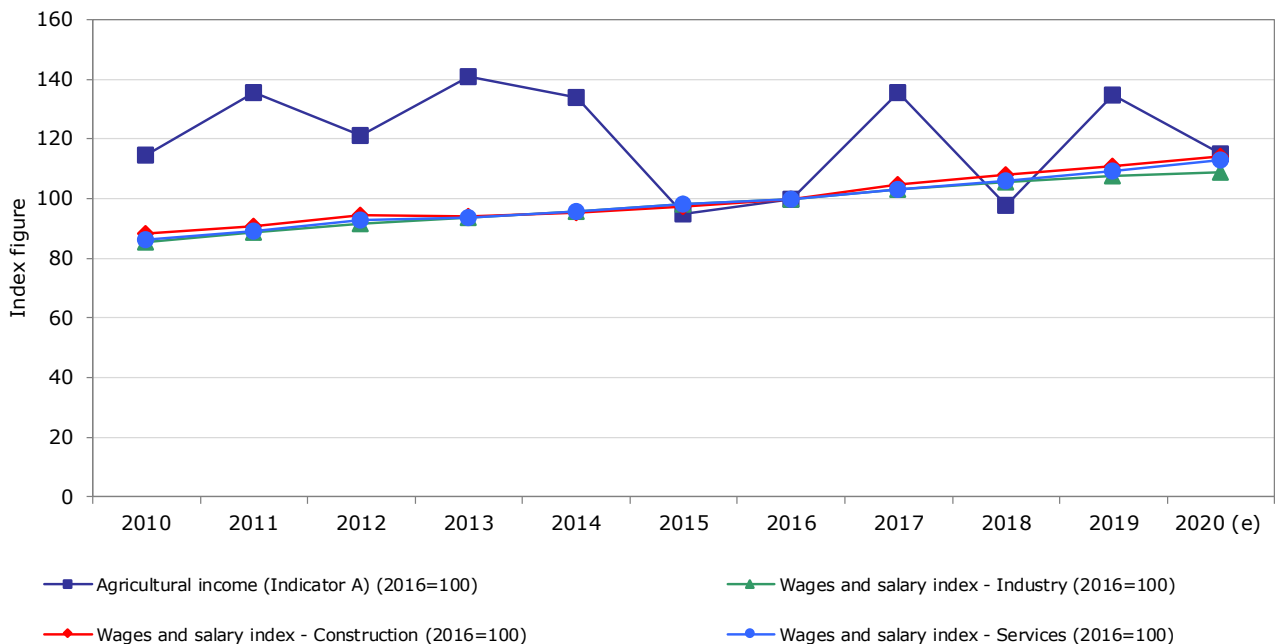
Evolution of agricultural labour input



Source: Eurostat(Online Data Table: aact_ali01)

Updated: June 2021

Evolution of agricultural income (*) compared to wages



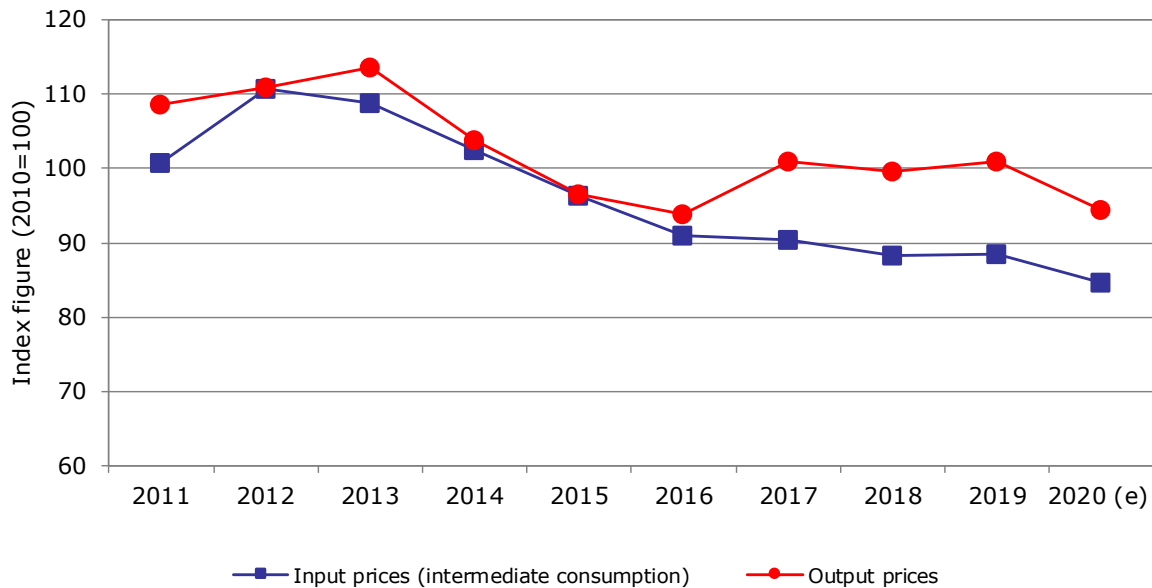
Source: Eurostat(Online Data Table: aact_eaa06, lc_lci_r2_a)

Updated: June 2021

(*) The so-called indicator A is the real net value added at factor cost of agriculture per annual work unit (AWU). The net value added at factor cost (factor income) is calculated by subtracting the consumption of fixed capital from gross value added at basic prices and adding the value of subsidies less taxes. The AWU is defined as the work volume corresponding to one full-time employed worked.

4.5. AGRICULTURE: ECONOMIC ACCOUNTS

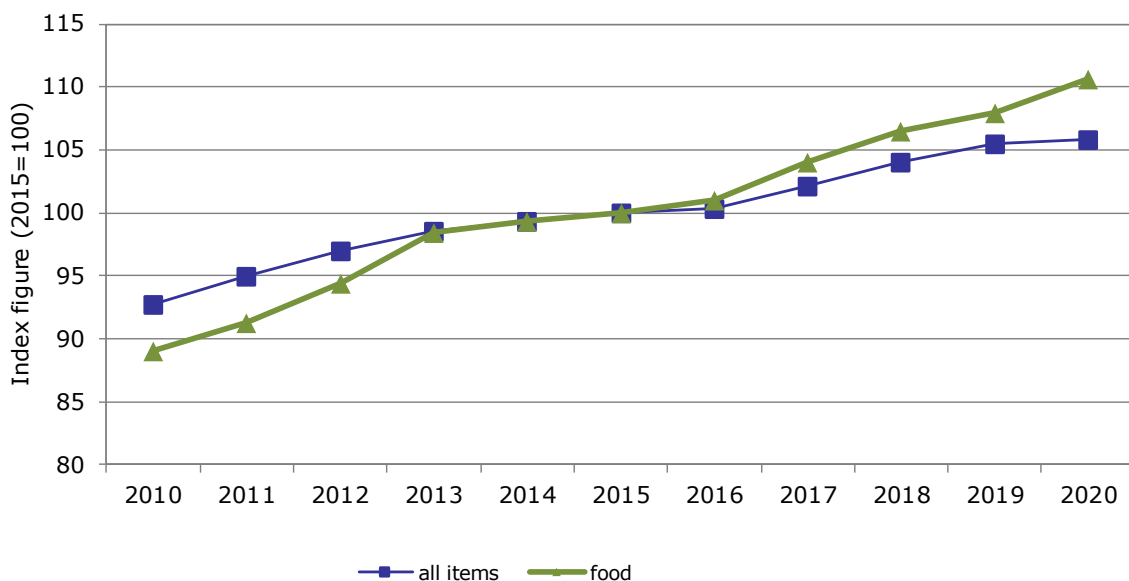
Evolution of agricultural input and output prices



Source: Eurostat(Online data table: aact_eaa05)

Updated: June 2021

Evolution of harmonised indices of consumer prices

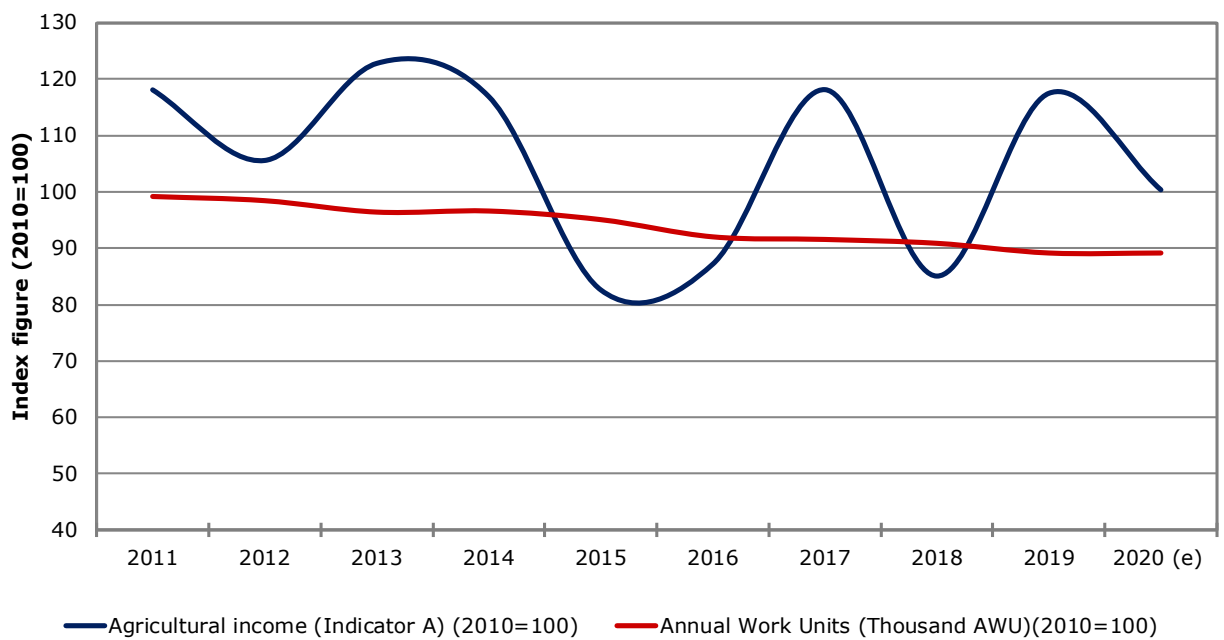


Source: Eurostat(Online Data Table: prc_hicp_aind)

Updated: June 2021

4.6. AGRICULTURE: ECONOMIC ACCOUNTS

Farms' income and labour development index (real terms)

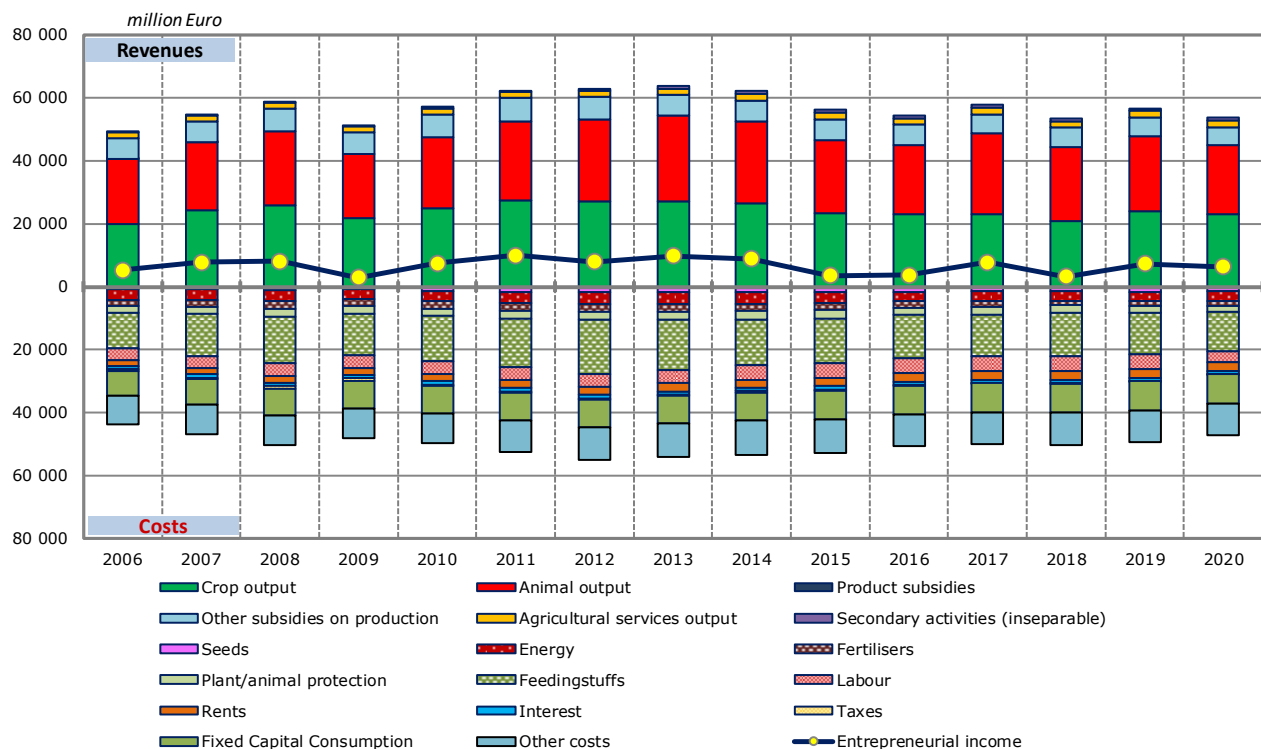


Source: Eurostat(Online Data Table: aact_eaa06, aact_ali01) and DG Agriculture and Rural Development

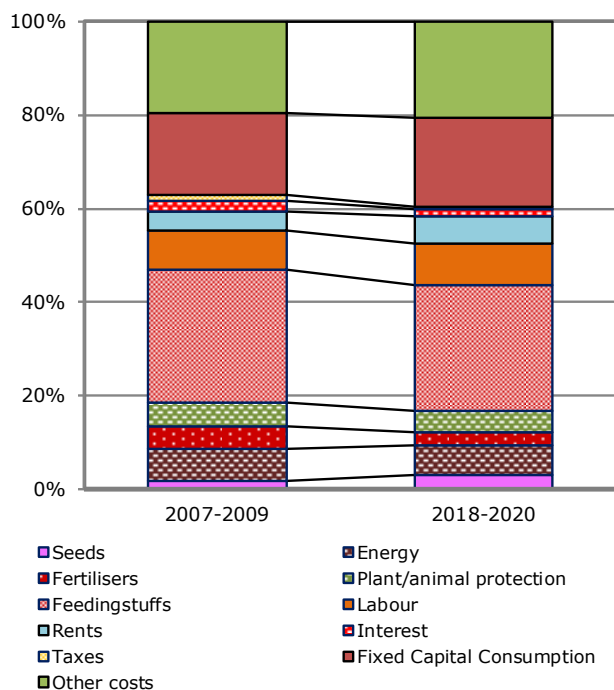
Updated: June 2021

4.7. AGRICULTURE: ECONOMIC ACCOUNTS

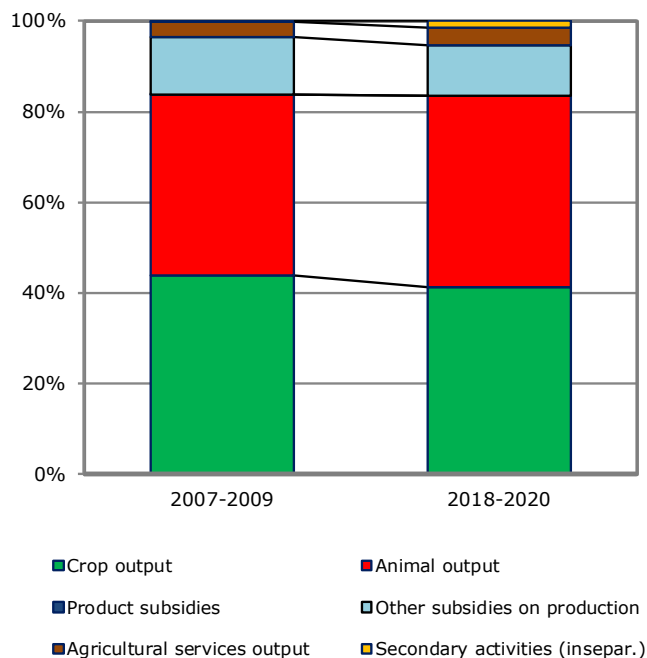
Agricultural income (real prices)



Cost Structure



Revenue Structure



5.1. AGRICULTURAL TRADE

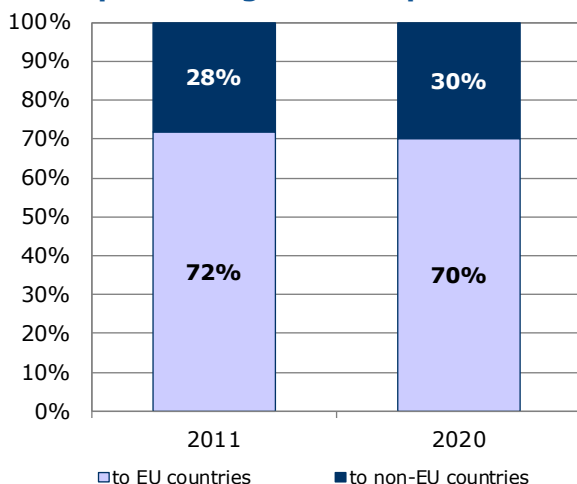
Agricultural trade in 2020

By category of product	Total trade	Trade with EU countries		Trade with non-EU countries	
	Million EUR	Million EUR	% change 2020/2019	Million EUR	% change 2020/2019
Exports					
Commodities	14 711	9 830	5.2%	4 880	17.8%
Other primary products	15 149	10 969	-7.1%	4 177	-5.7%
Processed products	12 180	9 564	-0.5%	2 614	-2.1%
Food preparations	21 334	14 204	2.1%	7 098	2.2%
Beverages	3 768	2 329	-13.5%	1 436	-9.7%
Non edible	8 080	5 843	-7.6%	2 218	-12.9%
Total agricultural products	75 222	52 739	0.4%	22 424	-9.4%
as % of total exports	6.2%	8.3%		3.9%	
Imports					
Commodities	19 584	12 931	5.8%	6 652	-1.7%
Other primary products	28 334	23 295	1.8%	5 040	2.0%
Processed products	14 752	12 693	0.9%	2 059	6.8%
Food preparations	13 505	11 252	2.4%	2 235	4.2%
Beverages	3 155	2 563	-3.1%	592	-15.0%
Non edible	12 931	11 134	3.3%	1 792	-9.5%
Total agricultural products	92 261	73 868	2.4%	18 369	-0.46%
as % of total imports	9.0%	11.4%		4.9%	
Balance					
Commodities	-4 873	-3 101		-1 772	
Other primary products	-13 186	-12 326		- 863	
Processed products	-2 572	-3 129		555	
Food preparations	7 829	2 952		4 864	
Beverages	613	- 234		844	
Non edible	-4 851	-5 291		426	
Total agricultural products	-17 040	-21 129		4 054	

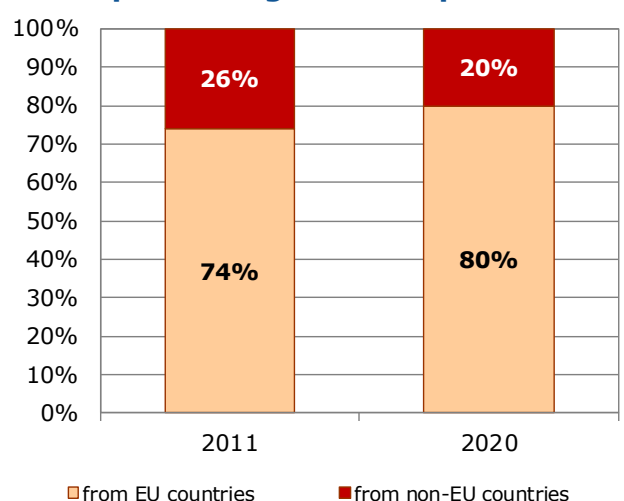
Source: Directorate General for Agriculture and Rural Development, based on COMEXT data

Updated: June 2021

Exports of agricultural products

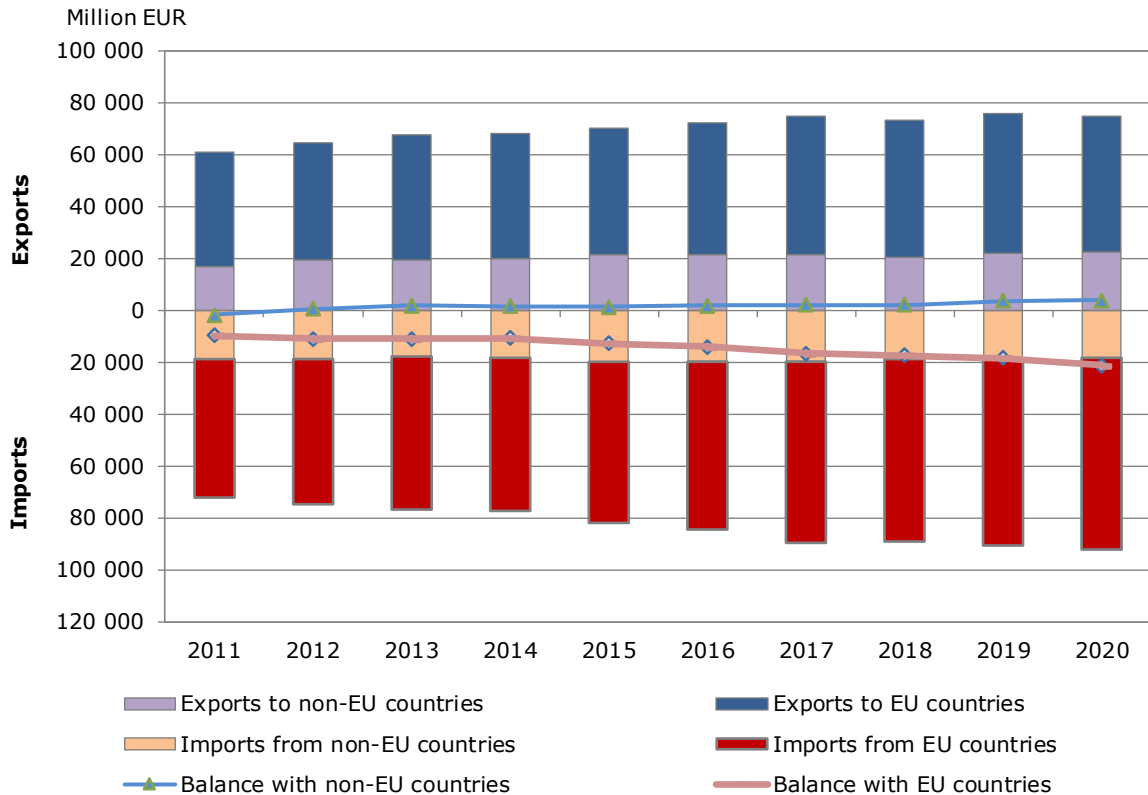


Imports of agricultural products

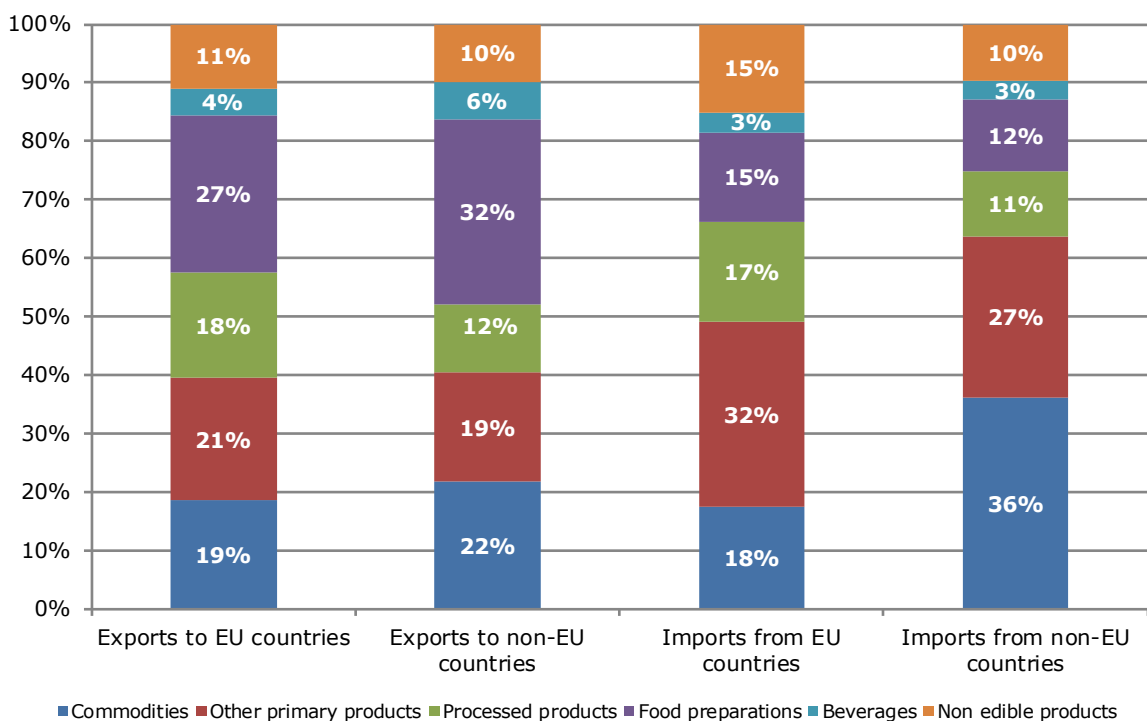


5.2. AGRICULTURAL TRADE

Evolution of agricultural trade with EU and non-EU countries



Structure of agricultural exports and imports



6.1. FARM STRUCTURE

Structure of agricultural holdings

Holdings		2010		2016	
		Total	%	Total	%
By UAA (*)	< 5 ha	27 360	9.1%	23 630	8.6%
	5-10 ha	47 310	15.8%	44 370	16.1%
	10-20 ha	63 160	21.1%	57 050	20.7%
	20-30 ha	30 970	10.4%	26 660	9.7%
	30-50 ha	45 100	15.1%	39 780	14.4%
	50-100 ha	51 620	17.3%	47 950	17.4%
	> 100 ha	33 620	11.2%	36 680	13.3%
By economic size (**)	< 4 000 €	8 150	2.7%	7 500	2.7%
	< 8 000 €	26 460	8.8%	21 510	7.8%
	< 15 000 €	37 170	12.4%	33 650	12.2%
	< 25 000 €	30 850	10.3%	29 560	10.7%
	< 50 000 €	42 320	14.1%	37 200	13.5%
	< 100 000 €	49 310	16.5%	40 100	14.5%
	< 250 000 €	63 970	21.4%	53 820	19.5%
	< 500 000 €	27 640	9.2%	32 350	11.7%
	=/≥ 500 000 €	13 280	4.4%	20 430	7.4%
By LSU (***)	0	83 040	27.8%	91 430	33.1%
	0-5	32 570	10.9%	28 970	10.5%
	5-10	21 810	7.3%	18 130	6.6%
	10-15	16 380	5.5%	13 850	5.0%
	15-20	12 770	4.3%	11 050	4.0%
	20-50	48 520	16.2%	37 750	13.7%
	50-100	37 150	12.4%	27 530	10.0%
	100-500	42 690	14.3%	41 920	15.2%
	> 500	4 210	1.4%	5 500	2.0%
By age of holder	< 35 years	21 290	7.1%	20 550	7.4%
	35-44 years	73 420	24.5%	47 730	17.3%
	45-54 years	109 270	36.5%	98 800	35.8%
	55-64 years	79 270	26.5%	86 380	31.3%
	> 64 years	15 900	5.3%	22 670	8.2%
	not applicable	:	:	:	:
Total		299 150	100%	276 130	100%
UAA in 1 000 ha		16 704		16 715	
UAA (ha) per holding		55.8		61	

Source: Eurostat (Online Data Table: ef_m_farmleg), Farm Structure Survey

Updated: June 2021

(*) UAA = Utilised agricultural area.

(**) Economic size: The standard output of an agricultural product (crop or livestock), abbreviated as SO, is the average monetary value of the agricultural output at farm-gate price, in euro per hectare or per head of livestock. There is a regional SO coefficient for each product, as an average value over a reference period (5 years, except for the SO 2004 coefficient calculated using the average of 3 years). The sum of all the SO per hectare of crop and per head of livestock in a farm is a measure of its overall [economic size](#), expressed in euro.

(***) LSU = Livestock units. A LSU is equivalent to a dairy cow. The number of animals (heads) is converted into LSU using a set of coefficients reflecting the feed requirements of the different animal categories.

6.2. FARM STRUCTURE

Structure of farm labour force

2016			
Family labour force		Non family labour force	
persons:	475 110	Data not available	
of which women:	31.3%		
AWUs (*):	302 130	AWUs:	148 330
Holders	Family members	Regular non family labour force	Non regular non family labour force
persons:	persons:	persons:	Data not available
270 630	204 480	178 640	
of which women:	of which women:	of which women:	
10.2%	59.1%	35.3%	
AWUs:	AWUs:	AWUs:	AWUs:
186 150	115 980	148 330	52 150
Total farm labour force (persons)		653 760	
Total farm labour force (AWUs)		502 610	

Source: Eurostat(Online Data Table: ef_lf_main), Farm Structure Survey

Updated: June 2021

* AWUs = Annual work units. An AWU is equivalent to a worker employed on a full time basis for one year.

6.3. FARM STRUCTURE

Structure of farm livestock

Livestock and holdings with livestock in 2016

	Livestock unit (LSU)	Head (animal)	Thousand heads (animals)	Holding*	Percent structure	
					Livestock unit (LSU)	Holding*
Livestock	18 182 310	:	:	184 690	100%	100%
Live horses, asses, mules and hinnies	349 460	436 820	:	41 200	2%	22%
Live bovine animals	8 968 180	12 354 880	:	121 470	49%	66%
Live swine	6 475 000	28 652 960	:	40 210	36%	22%
Live sheep	185 600	1 856 020	:	19 560	1%	11%
Live goats	13 810	138 090	:	9 330	0%	5%
Live poultry	2 190 260	:	169 720	47 560	12%	26%
Rabbits, breeding females	:	:	:	:	:	:
Bees (hives)	:	:	:	:	:	:
Other animals	:	:	:	:	:	:

*note that holdings can keep various animals at the same time so the number of holdings with "Livestock" is less than the sum of groups of holdings with particular animals

Number of holdings with livestock herds by size class of livestock units, in 2016

ANIMALS/holdings*	Less than 5 LSU	From 5 to 9.9 LSU	From 10 to 14.9 LSU	From 15 to 19.9 LSU	From 20 to 49.9 LSU	From 50 to 99.9 LSU	From 100 to 499.9 LSU	500 LSU or over
Livestock	28 970	18 130	13 850	11 050	37 750	27 530	41 920	5 500
Live horses, asses, mules and hinnies	9 680	6 270	4 080	3 440	8 810	3 620	4 920	380
Live bovine animals	5 560	11 240	10 340	8 220	30 990	23 870	28 970	2 280
Live swine	3 240	2 340	2 030	1 860	6 200	5 060	16 320	3 160
Live sheep	6 050	3 870	1 840	1 160	2 860	1 650	1 910	220
Live goats	2 020	1 430	810	910	1 880	1 060	1 150	70
Live poultry	13 200	5 510	3 670	3 130	9 590	5 080	5 850	1 520
Rabbits, breeding females	:	:	:	:	:	:	:	:

*note that holdings can keep various animals at the same time so the number of holdings with "Livestock" is less than the sum of groups of holdings with particular animals

Number of livestock units in livestock herds by size classes of livestock units, in 2016

ANIMALS/LSU	Less than 5 LSU	From 5 to 9.9 LSU	From 10 to 14.9 LSU	From 15 to 19.9 LSU	From 20 to 49.9 LSU	From 50 to 99.9 LSU	From 100 to 499.9 LSU	500 LSU or over
Livestock	61 740	133 180	170 970	191 070	1 244 440	1 972 140	8 761 950	5 646 830
Live horses, asses, mules and hinnies	23 980	31 450	31 090	33 880	132 170	54 570	34 410	7 900
Live bovine animals	15 440	74 910	115 200	130 130	961 320	1 611 420	4 684 640	1 375 110
Live swine	4 270	6 550	10 150	14 080	93 900	224 790	3 491 770	2 629 500
Live sheep	11 410	15 440	9 660	8 300	30 390	44 740	57 000	8 660
Live goats	1 380	1 630	1 270	1 160	3 480	1 920	2 090	890
Live poultry	5 250	3 200	3 600	3 520	23 180	34 690	492 050	1 624 780
Rabbits, breeding females	:	:	:	:	:	:	:	:

Source: Eurostat online data tables ef_m_farmleg, ef_lsk_main.

Updated: September 2021

The data extracted in June and September 2021, for the most recent data see sources

This document does not necessarily represent the official views of the European Commission
© European Union, 2020 - Reproduction authorised provided the source is acknowledged

Contact: DG Agriculture and Rural Development, Farm Economics Unit

Tel: +32-2-29 75471 / E-mail: Agri-C3@ec.europa.eu